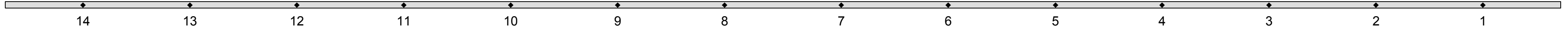
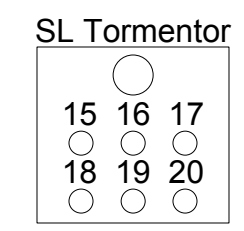
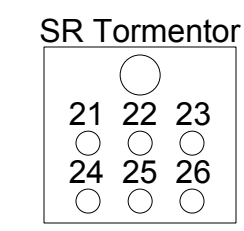
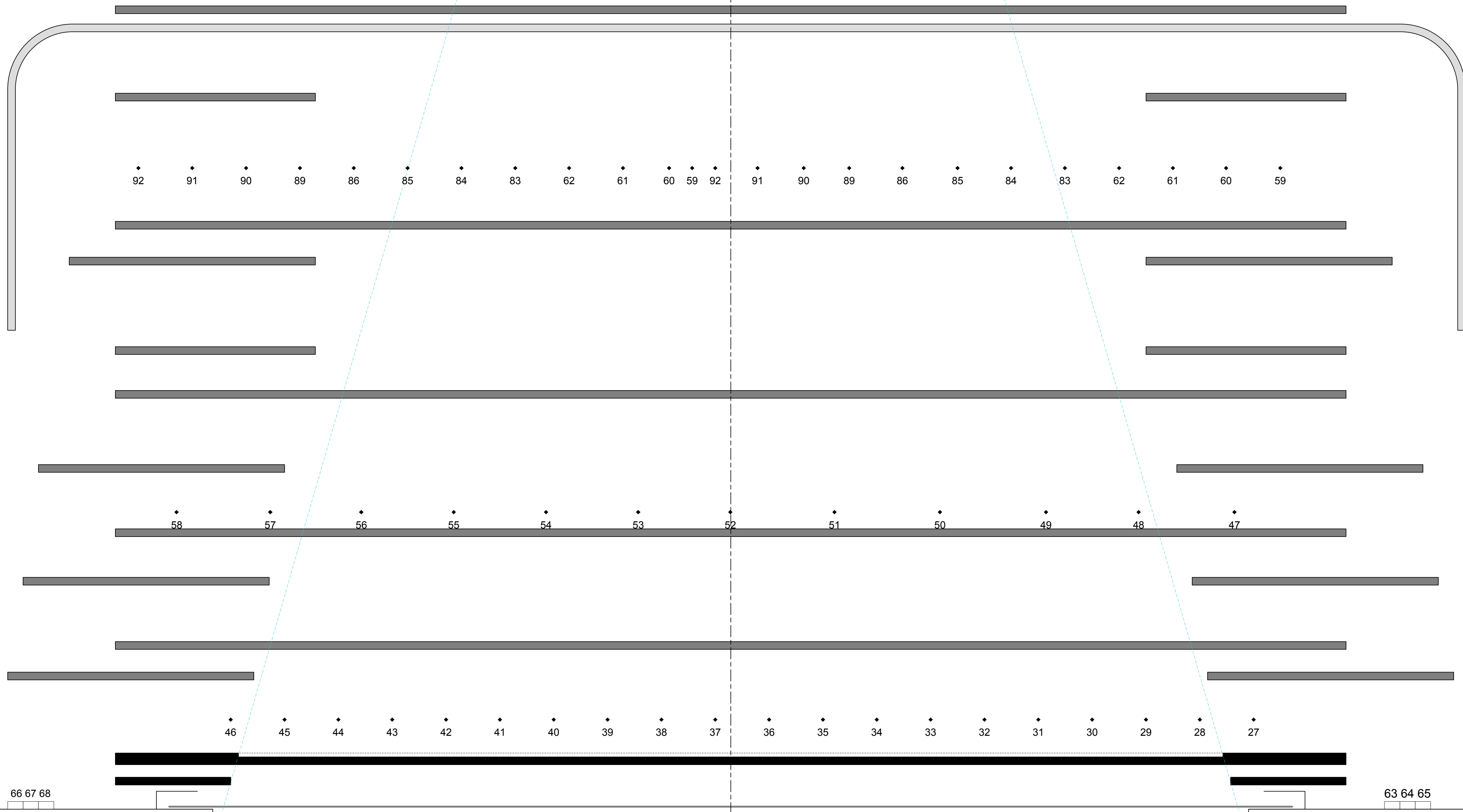
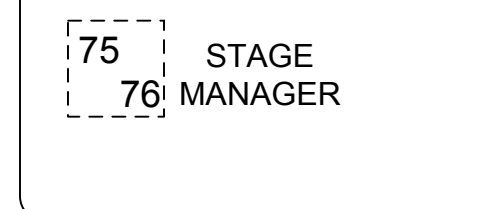
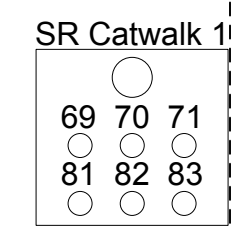
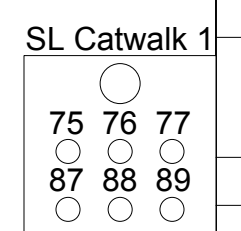
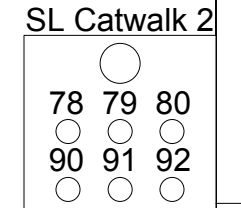
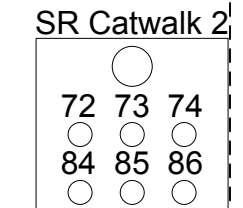


- 24' 2" BLACK CURTAIN (CROSSOVER)
- 23' 6" CYCLORAMA
- 22' 10" BACKDROP
- 22' 1" SPARE
- 21' 4" 2ND TRAVELLER
- 19' 0" 3RD ELECTRIC
- 18' 4" SPARE
- 17' 1" 4TH BORDER (DH5)
- 16' 7" 4TH LEG
- 14' 7" SPARE
- 13' 1" 1ST TRAVELLER
- 12' 4" SPARE
- 11' 7" 3RD BORDER (DH4)
- 10' 9" SPARE
- 9' 3" 3RD LEG
- 7' 10" 2ND ELECTRIC
- 7' 1" 2ND BORDER (DH3)
- 6' 9" SPARE
- 6' 4" 2ND LEG
- 5' 7" 2ND LEG
- 3' 5" 1ST BORDER (DH2)
- 3' 0" 1ST LEG
- 2' 6" 1ST LEG
- 1' 1" 1ST ELECTRIC
- 0' 0" TORMENTOR (DH1)
- 0' 4" DROP CURTAIN
- 0' 11" DRAW CURTAIN
- 1' 9" FIRE CURTAIN



LIGHTING
PLAN VIEW

Ottawa Little Theatre

SHOW: _____

DIRECTOR: _____

SET By: _____

LX By: _____

SCALE 1/2" = 1'-0" REV _____ DATE _____